



PARTNERS IN PAEDIATRICS ANNUAL REPORT 2025-2026

pip

www.partnersinpaediatrics.org

ABOUT US

Established in 1997, Partners in Paediatrics (PiP) is a collaborative partnership of organisations working together to improve the quality and accessibility of health services for children and young people across the West Midlands and the areas served by its member organisations.

Over the past 29 years, PiP has built strong, trusted relationships with NHS partners, third sector organisations, and key regional stakeholders. The Partnership has consistently acted as a regional advocate for children's and young people's services, ensuring their needs remain a priority within strategic planning and service development.

PiP supports thirteen clinical networks and educational forums, including three national networks and one international collaboration. Working strategically with Children's Leads and partner organisations to drive service improvement, standardisation of clinical guidelines, and the delivery of high-quality, patient-centred care.

A small core team coordinates the Partnership's work programme, while its achievements are driven by the sustained commitment and collective expertise of its member organisations.

Looking ahead, PiP recognises that strong collaboration and effective paediatric networking will be essential as the NHS continues to evolve. By placing children, young people, and their families at the centre of all its workstreams, the Partnership continues to provide a clear, influential voice across health, social care, and third sector systems.



PARTNERS IN PAEDIATRICS

Poem by Dr Anjum Gandhi

PiP, unique, unparalleled an example of pristine high-level collaboration

Bringing diverse teams together, breaking barriers and separation

Delivering training and learning events, providing exceptional education

Supporting over a dozen networks, a feat achieved with hard work, commitment and preparation

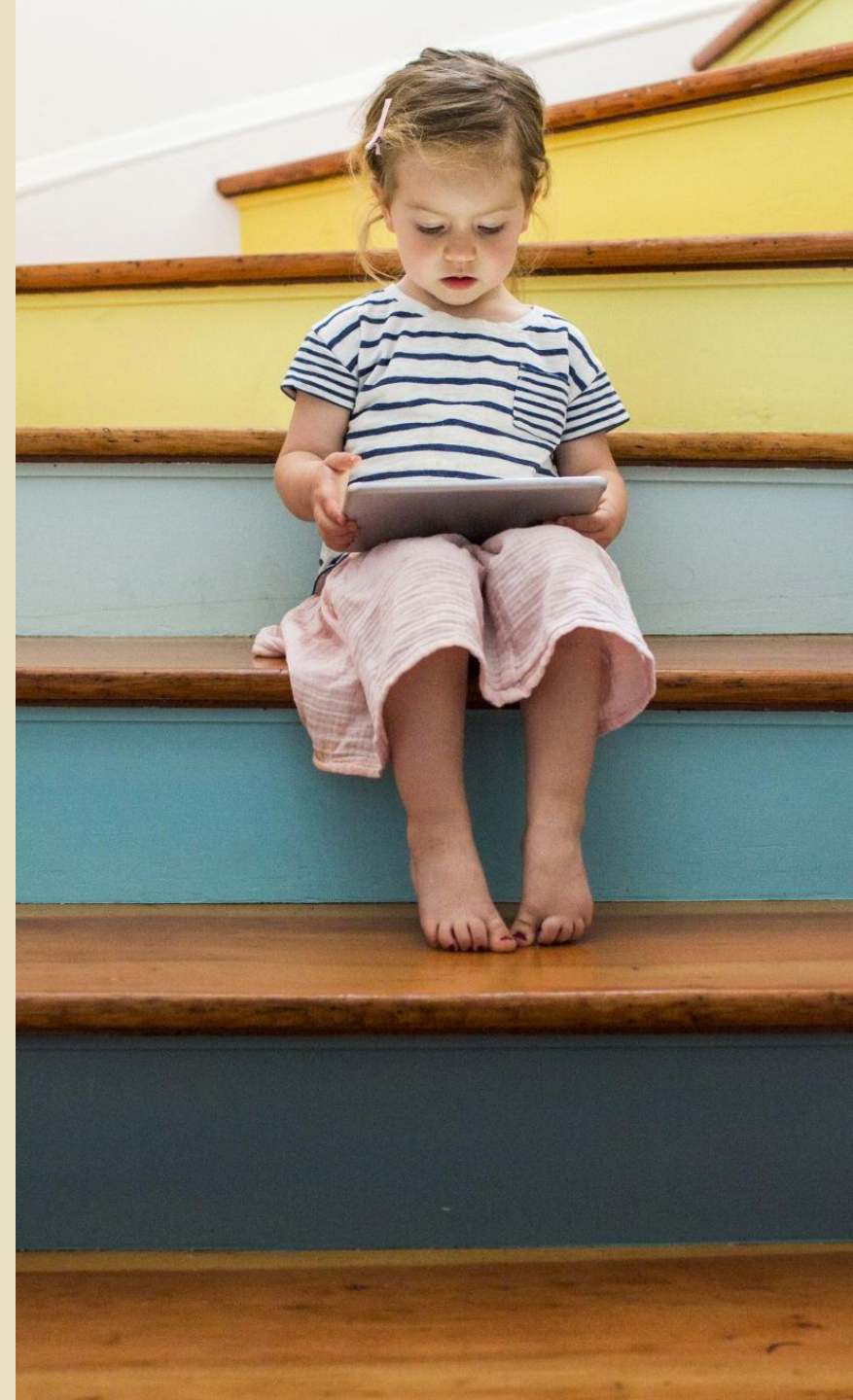
Numerous achievements but regional paediatric guidelines undoubtedly the best creation

Well attended conferences a marker of continuous success, fills our heart with elation

No challenge insurmountable, every task accepted without the slightest hesitation

Our motto to promote best practice and improve paediatric outcomes with focus and dedication

Sharing, learning, making children's world happy and healthy, our destination



PIP CORE GROUP TEAM

Working together to improve outcomes for children and young people

pip

partners in paediatrics

www.partnersinpaediatrics.org



Dr Kate Thomas

PiP Chair



Dr Anjum Gandhi

PiP Clinical Lead



Mary Passant

PiP Director



Amanda Turner

Partnership Manager



Zureena Walters

Events Facilitator



Alison Warren

PiP Education Advisor



Ally Davies

Project Lead

OBJECTIVES – WHAT PIP AIMS TO ACHIEVE

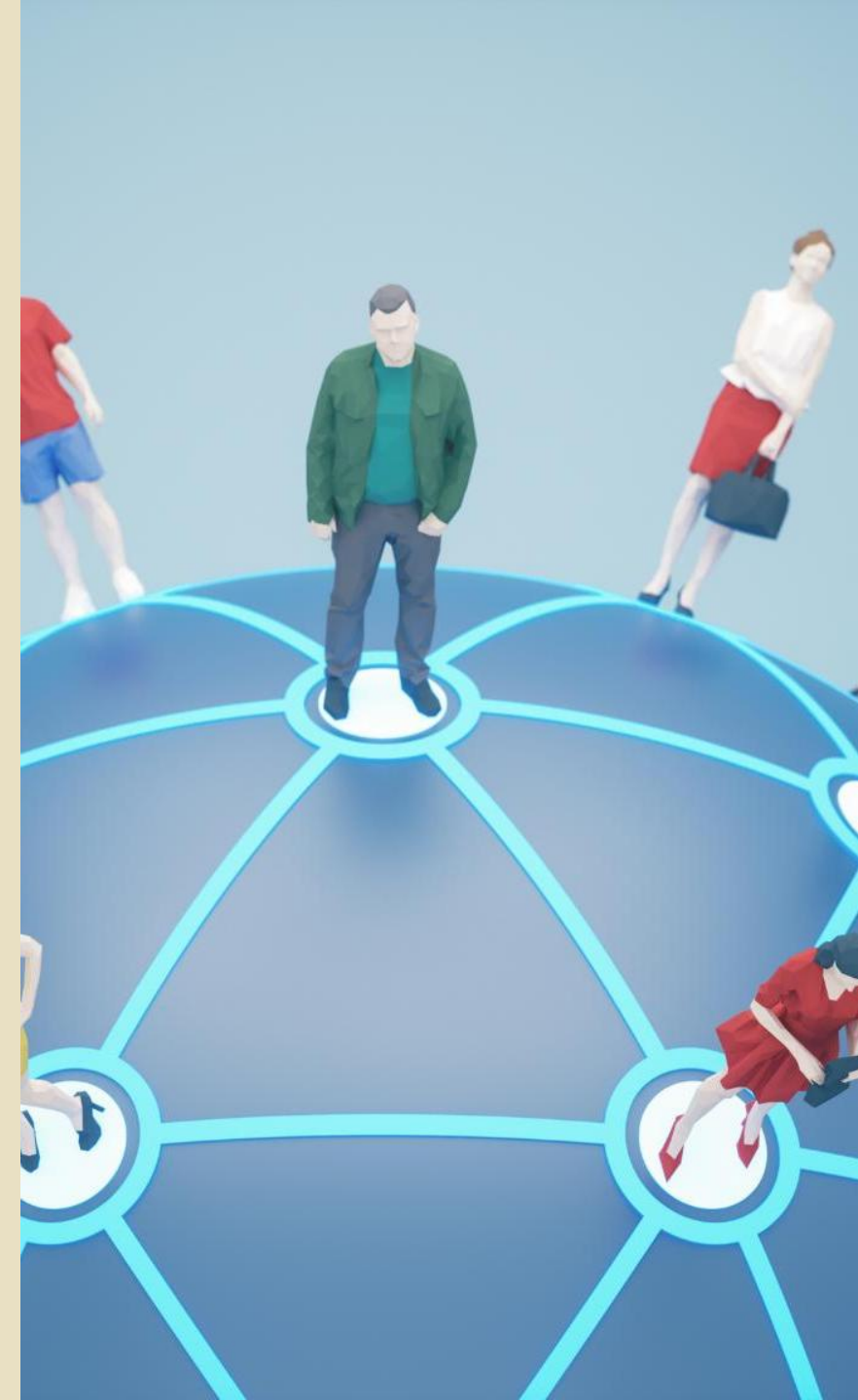
Facilitate the development of clinical networks and support associated workstreams where appropriate.

Work with, and inform, commissioners to improve the sustainability of services and outcomes of care.

Develop high quality paediatric clinical guidelines and pathways of care.

Provide educational forums and deliver training and learning events to support professional development.

Promote and share good practice at regional and national levels.



AIMS AND OBJECTIVES – STRATEGIC DETAIL

Facilitate the development of clinical networks and support associated workstreams by enabling collaboration across organisations, specialties, and care settings. This includes coordinating stakeholders, aligning priorities, supporting service redesign initiatives, and ensuring workstreams are delivered effectively and in line with agreed objectives.

Work collaboratively with commissioners to improve the sustainability of services and outcomes of care by providing clinical insight, population health intelligence, and evidence-based recommendations. This includes informing commissioning decisions, supporting pathway optimisation, reducing unwarranted variation, and helping to ensure services are high quality, resilient, and financially sustainable.

Develop and maintain high-quality paediatric clinical guidelines and pathways of care that are evidence-based, consistently applied, and regularly reviewed. This includes engaging multidisciplinary teams, incorporating national standards and best practice, and supporting implementation to improve safety, quality, and equity of care.

Provide educational forums and deliver training and learning events to support ongoing professional development across the paediatric workforce. This includes facilitating knowledge sharing, supporting workforce development, promoting innovation, and ensuring staff have access to up-to-date clinical guidance and skills development opportunities.

Promote, evaluate, and share good practice at regional and national levels by capturing learning from service improvement initiatives, benchmarking performance, and disseminating successful models of care. This includes supporting spread and adoption of innovation to improve outcomes for children and young people.



STRATEGIC PRIORITIES AND PROGRESS:

Focus on Paediatric Excellence

During the reporting period, our focus was on strengthening paediatric clinical excellence through system-wide collaboration, stronger links with evidence-based commissioning, and the delivery of consistent, high-quality care. The following priorities outline our strategic objectives, key actions undertaken, and the impact achieved for children and young people. **System-wide Collaboration**

The strategy emphasises partnership across organisations to navigate NHS complexities and improve paediatric services.

Paediatric Clinical Network Development:

Strategic Objective:

Build robust and sustainable paediatric clinical networks that improve equity, quality, and continuity of care.

Key Actions and Progress:

Supported the establishment and maturation of paediatric clinical networks across specialties and geographies, with representation from tertiary, secondary, community, and primary care settings.

Clarified governance arrangements within networks, including defined roles, accountability, and decision-making processes.

Enabled multidisciplinary collaboration through regular network meetings, shared digital platforms, and agreed standards for communication and data sharing.

Aligned network activity with key system workstreams, including workforce planning, digital transformation, quality improvement, research, and population health.

Promoted system-wide models of care that support delivery closer to home while maintaining access to specialist expertise.

Impact:

Improved coordination across paediatric services.

Reduced duplication of activity and clearer referral pathways.

More consistent outcomes and experiences for children and young people.



PROFESSIONAL EDUCATION & TRAINING

Strategic Objective:

Strengthen the paediatric workforce through continuous learning and capability development.

Key Actions and Progress:

Supported clinical network activity to enhance shared learning, peer support, and professional collaboration.

Promoted education and training aligned with new and updated clinical guidelines and pathways.

Contributed to workforce development discussions to support sustainable, high-quality paediatric services.

Impact:

Improved workforce capability and confidence.

Greater consistency in clinical practice across settings.

Stronger foundations for future service improvement.



GUIDELINE PATHWAY & INNOVATION

Strategic Objective:

Drive consistency, safety, and excellence in paediatric care through high-quality clinical guidance and clear care pathways.

Comprehensive Paediatric Clinical Reference App:

This resource provides **comprehensive coverage of paediatric care**, including acute and emergency management, neonatal care, chronic paediatric conditions, infectious diseases, and developmental disorders. It is grounded in **evidence-based guidelines**, reflecting current standards and best practices in paediatric medicine.

The App is designed for **practical bedside use**, the content is organised with clear bullet points, tables, and clinical algorithms to support rapid decision-making in wards, clinics, and emergency settings. Dedicated sections on **critical care and resuscitation** offer guidance for life-threatening situations, intensive care management, and emergency procedures.

An **updated medication formulary with weight-based paediatric dosing charts** ensures safe and accurate prescribing. The guide supports a **multidisciplinary healthcare team**, including doctors, nurses, and allied health professionals involved in paediatric care.

The app's compact design makes it a reliable point-of-care reference that supports safe, efficient clinical practice and improved patient outcomes.

Bedside Clinical Guidelines Partnership

in association with

partnersinpaediatrics

Paediatric Guidelines

LIVE DIGITAL VERSION

2025-2028



www.partnersinpaediatrics.org

GUIDELINES KEY ACTIONS AND PROGRESS

PiP & the Bedside Clinical Partnership have led the development, review, and dissemination of evidence-based paediatric clinical guidelines aligned with national standards and emerging research.

Ensured guidelines were co-produced with clinicians across care settings and, where appropriate, informed by service user perspectives.

Designed and implemented streamlined pathways to support timely access, appropriate escalation, and safe transitions between services.

Improved digital accessibility of guidelines and pathways to support real-time clinical decision-making.

Established review and audit mechanisms to ensure guidance remains current and effective.

Impact:

Reduced unwarranted variation in clinical practice.

Improved patient safety and reliability of care.

Clearer and more consistent care journeys for children and families.



PiP are working in Partnership with KIDS NTS to include their Guidelines in the PiP App. We hope to share news on this soon!

CHAIRS FOREWARD

DR KATE THOMAS

My first year as Chair of PiP has been an incredibly rewarding experience.

Working alongside the Core Team has shown me how a small group of dedicated individuals can make a meaningful difference in improving care. Their commitment, collaboration, and shared purpose have been both inspiring and impactful.

As the Chair, I would like to emphasise that the financial stability of PiP remains paramount. This year, we have made some significant decisions, particularly in the development of the Guideline App. As a non-profit organisation, our priority is to place our members at the centre of our decision-making. I hope that the development of the app will provide meaningful support to all our members in their clinical practice.

This year, we will continue to provide high-quality education while actively listening to our members' needs. We are committed to working closely with our members, growing together, and adapting as necessary to ensure we meet evolving expectations.



CLINICAL LEAD UPDATE

DR ANJUM GANDHI

In January 2026, we successfully launched the **Clinical Guidelines App**, developed to support safe, consistent, and practical decision-making at the bedside. The app forms part of the PiP membership offer and is available free of charge to all members.

Planned next steps include collaborative work with KIDS/NTS to incorporate their clinical guidelines into the app, alongside the development of a second publication focused on community-based paediatric guidance.

During the 2025–26 reporting period, we delivered seven education days across our networks. These sessions were well attended, with over 600 national and regional colleagues participating, reflecting continued engagement and demand for high-quality paediatric education.

Looking ahead, we remain committed to providing relevant, high-quality educational opportunities for paediatrics and will continue to work closely with our members to ensure that our programme aligns with clinical need and service priorities.



NEWS

Expanding Access to Clinical Guidance

During the year, Partners in Paediatrics made significant progress in extending access to its app-based clinical guidelines beyond their West Midlands origins, with a clear ambition to support clinicians across the UK. The continued development and promotion of the PiP Guidelines App has enabled wider uptake of consistent, evidence-based paediatric guidance, supporting safe and effective clinical decision-making across a range of care settings. This work represents an important step towards establishing a nationally accessible resource for paediatric practice.

Community Guidelines

Alongside this digital expansion, a **new and distinct project** was initiated: the development of a dedicated **Community Paediatrics Guideline Book**. This work goes beyond a simple increase in the number of available guidelines, recognising the unique clinical contexts, pathways and professional needs within community paediatrics. The project reflects a strategic commitment to ensuring guidance is not only comprehensive, but also appropriately tailored to different models of care, further strengthening the relevance and impact of Partners in Paediatrics resources.



NETWORKS PIP SUPPORT



Regional Networks

West Midlands Paediatric Anaesthetic Network

Paediatric Anaesthetic Trainee Network

Paediatric Epilepsy Nurses Network

Midlands Children's Long Term Ventilation Network

Paediatric Senior Nurses Forum

West Midlands Child Death Review Network

West Midlands Child Protection Special Interest Group

National Networks:

Association of Child Death Review Professionals

Paediatric Educators Network- Supporting Opportunities

Paediatric Advanced Practice Network

Paediatric Liver AHP and Nurse Network

International Groups

International Society for the Study and Prevention of Perinatal and Infant Death (IPSID)

Education Forums:

West Midlands Neurology Forum

Cerebral Palsy & Spasticity Network

Looked After Children Network

PIP EDUCATION

Annual Conference and AGM

PiP organises an Annual Conference and AGM to bring professionals together for knowledge exchange and networking.

Ongoing Education Forums

PiP hosts ongoing education forums across nursing, paediatrics, neurology, and other specialties to support continuous learning.

Commitment to Professional Development

PiP's efforts emphasise professional development and knowledge sharing as essential to delivering high-quality care.

2026

- Tuesday 19th May – Looked After Children (LAC) Study Day
- Friday 22nd May – Paediatric Anaesthetic Network (PAN) Conference
- Wednesday 24th June – West Midlands Child Death Review Network (CDRN) Study Day
- Friday 26th June – Paediatric Epilepsy Nurses Network (PENN) Conference
- Friday 3rd July – Midlands Paediatric Complex Epilepsy and Epilepsy Surgery Study Day
- Wednesday 9th July – Network Leadership Day – Developing Our Leaders
- Thursday 1st October – Paediatric Educators Network – Supporting Opportunities (PENSO)
- Monday 5th October – Liver Network Study Day
- Tuesday 13th October – Partners in Paediatrics Annual Conference & AGM
- Tuesday 3rd & Wednesday 4th November – Association of Child Death Review Professionals (ACDRP) Annual Conference
- November – West Midlands Spasticity Network Day

Dates for Diary 2027

- Friday 12th March – Paediatric Advanced Practice Network Conference

FINANCE 25-26

Overview			Closing balance (cleared only)
		PiP Income	£ 35,689.60
Balance		Guideline Books	£ 1,061.90
Opening balance	£ 167,999.98	Looked After Children	£ 2,842.07
25-26 Subscription Income	£ 105,000.00	Cerebral Palsy and Spasticity	£ 513.03
Pay Costs	£ 134,614.89	WM Paediatric Anaesthetic	£ 16,147.65
Closing balance	£ 76,539.91	Paediatric Epilepsy Nurses	£ 1,516.00
		WM Child Death Overview Panel	£ 765.41
		Long Term Ventilated Network	£ -
		Neurology Forum	£ 1,479.75
		Paediatric Senior Nurse Forum	-£ 945.90
		Project Support BCH	£ 12,313.79
		PAPN	£ 3,837.48
		PENSO	£ 1,319.13
		Balance	£ 76,539.91

MEMBERS DIRECTORY

NHS Birmingham and Solihull Integrated Care Board
Birmingham Community Healthcare NHS Foundation Trust
Birmingham Women's and Children's NHS Foundation Trust
Coventry & Warwickshire Partnership NHS Trust
Dudley Group NHS Foundation Trust
East Cheshire NHS Trust
George Eliot Hospital NHS Trust
Midlands Partnership NHS Foundation Trust
Robert Jones and Agnes Hunt Orthopaedic Hospital NHS Foundation Trust
Sandwell and West Birmingham Hospitals NHS Trust
Shropshire Community Health NHS Trust
South Warwickshire NHS Foundation Trust
The Royal Orthopaedic Hospital NHS Foundation Trust
The Royal Wolverhampton NHS Trust
The Shrewsbury and Telford Hospital NHS Trust
University Hospitals Birmingham NHS Foundation Trust
University Hospitals Coventry and Warwickshire NHS Trust
University Hospitals of North Midlands NHS Trust
Walsall Healthcare NHS Trust
Worcestershire Acute Hospitals NHS Trust
Herefordshire and Worcestershire Health and Care NHS Trust
Wye Valley NHS Trust



ACKNOWLEDGEMENTS

Contributions

Mary Passant – Director PiP

Anjum Gandhi – Clinical Lead

Kate Thomas – Chair

Amanda Turner – Partnership Manager

Zureena Walters – Event Facilitator

Thank you!

The team would like to extend sincere thanks to all of our PiP members, network chairs, network members, and contributors.

Your ongoing commitment, collaboration, and willingness to share knowledge and support one another are what make this organisation so strong and impactful.

Every contribution—big or small—helps drive our shared success, and we truly appreciate the time, energy, and expertise you bring.



Thank you to Broadstones Consulting for their work and commitment to developing our Guidelines App

