

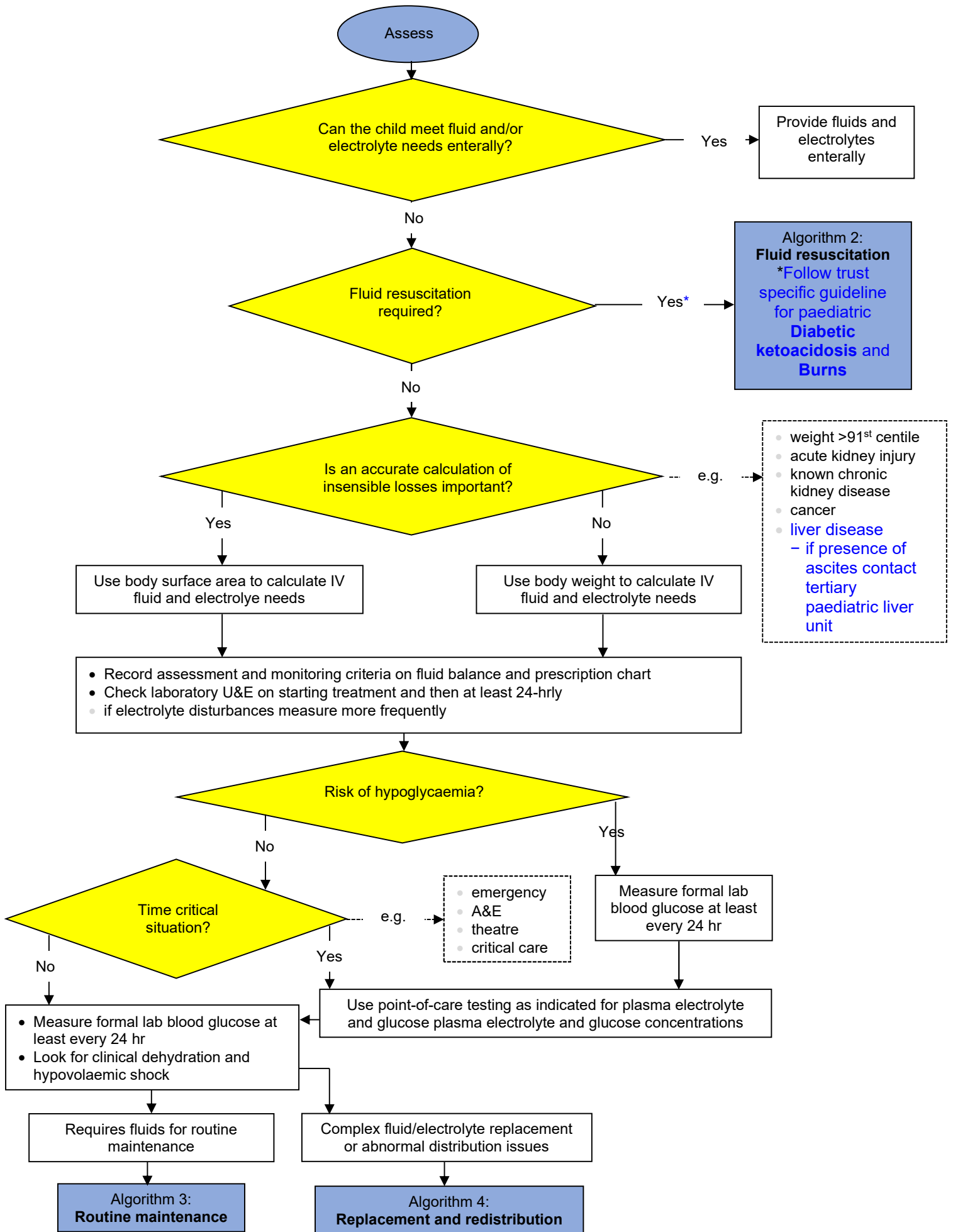
INTRAVENOUS FLUID THERAPY • 1/7

Use volumetric pump to administer IV fluids

- Nurse to check and document following hourly:
 - infusion rate
 - infusion equipment
 - site of infusion
- Close all clamps and switch off pump before removing giving set

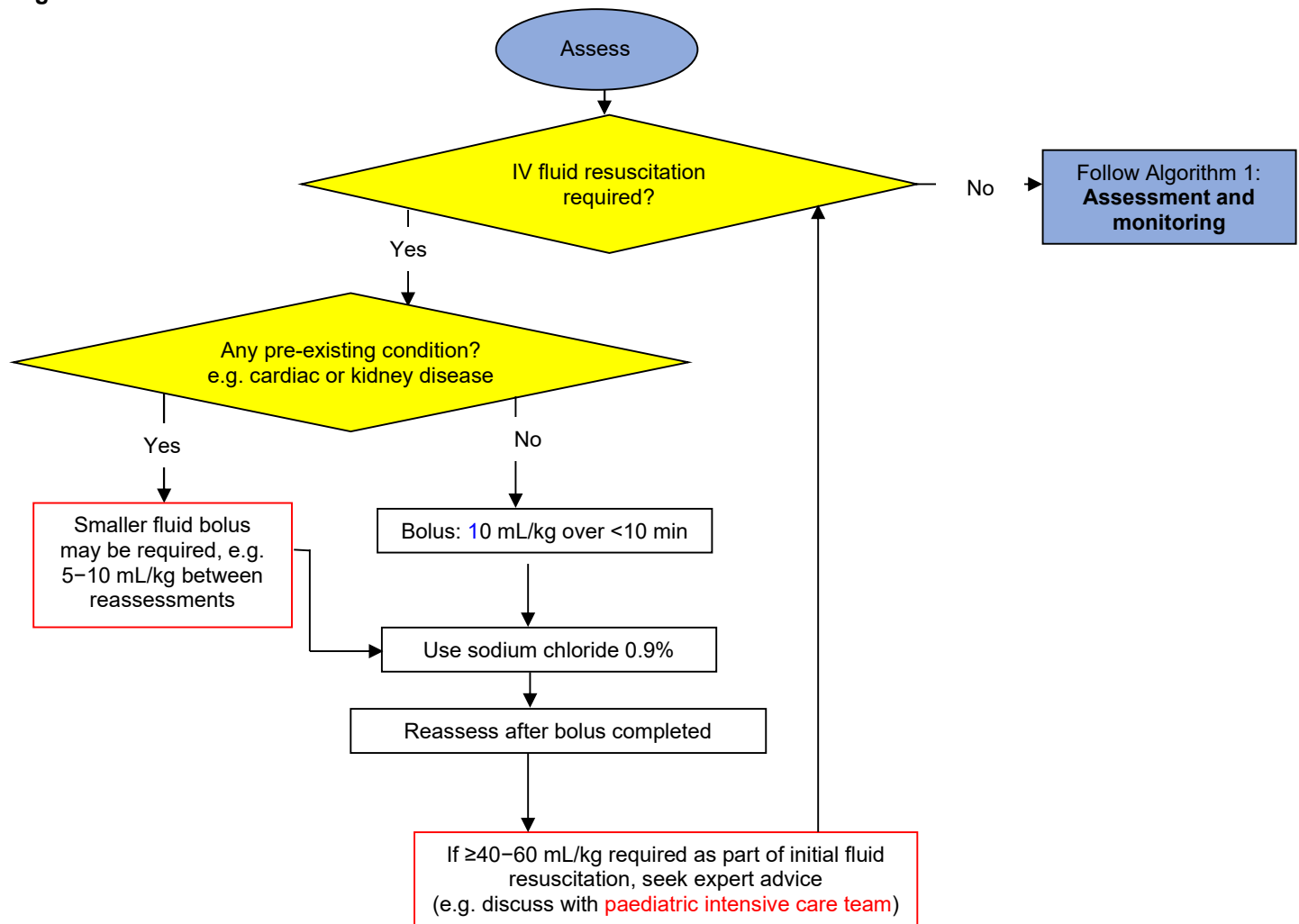
INTRAVENOUS FLUID THERAPY • 2/7

Algorithm 1: Assessment and monitoring



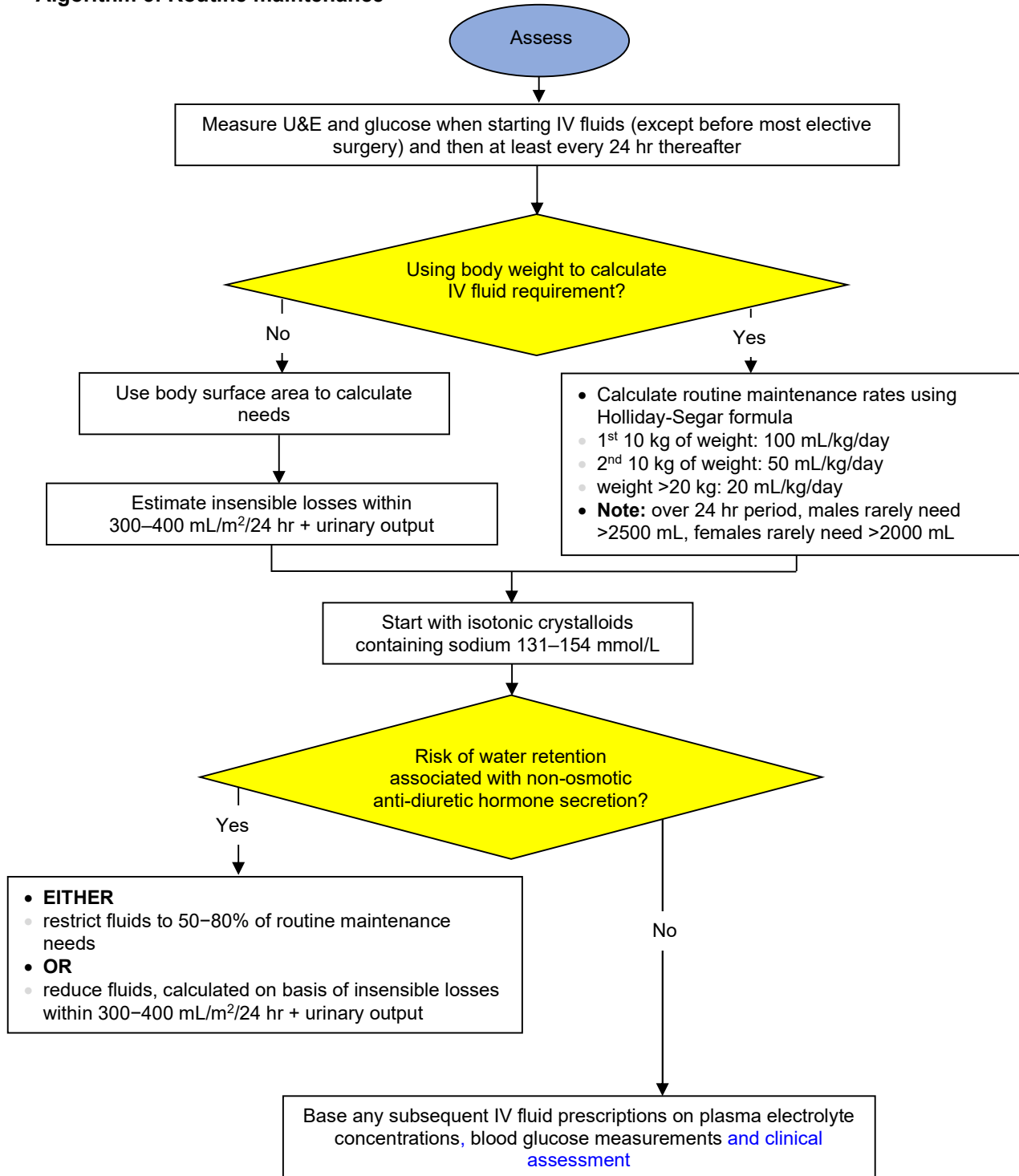
INTRAVENOUS FLUID THERAPY • 3/7

Algorithm 2: Fluid resuscitation



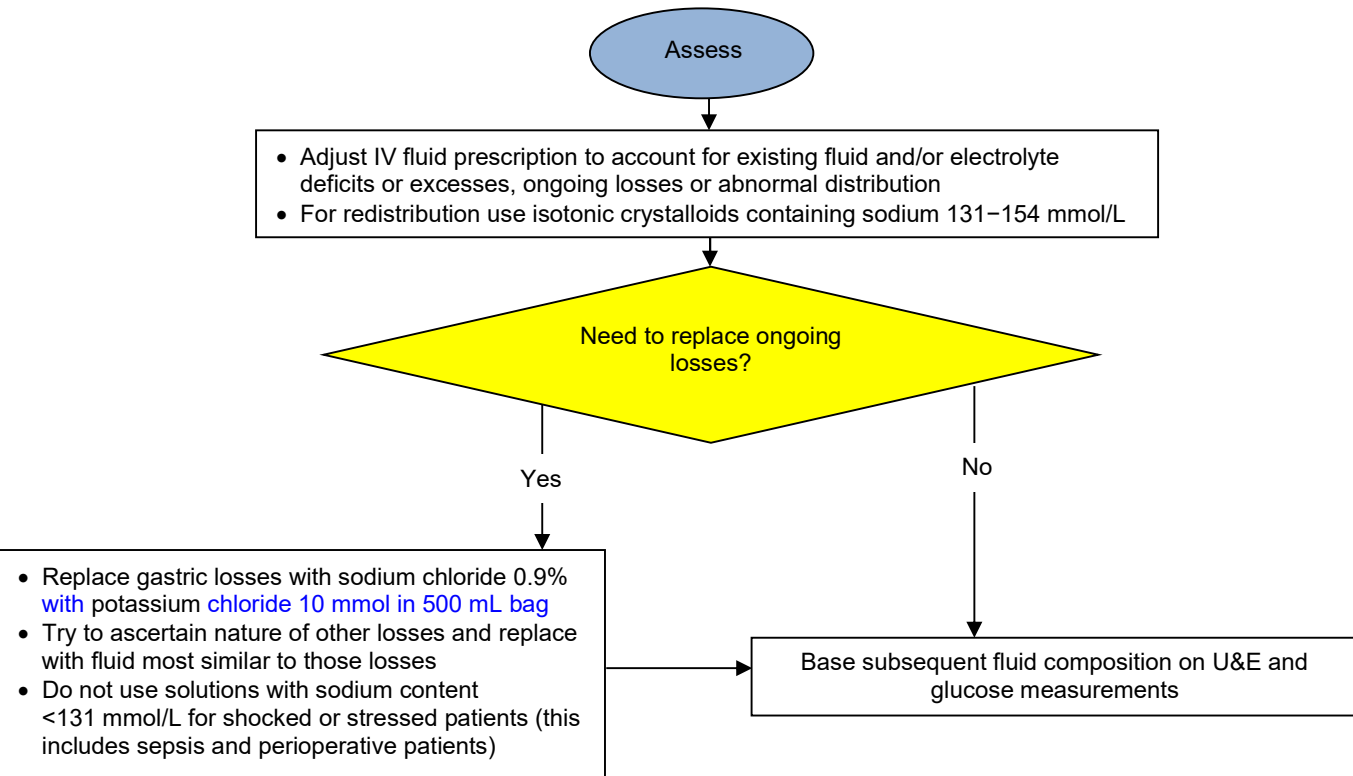
INTRAVENOUS FLUID THERAPY • 4/7

Algorithm 3: Routine maintenance



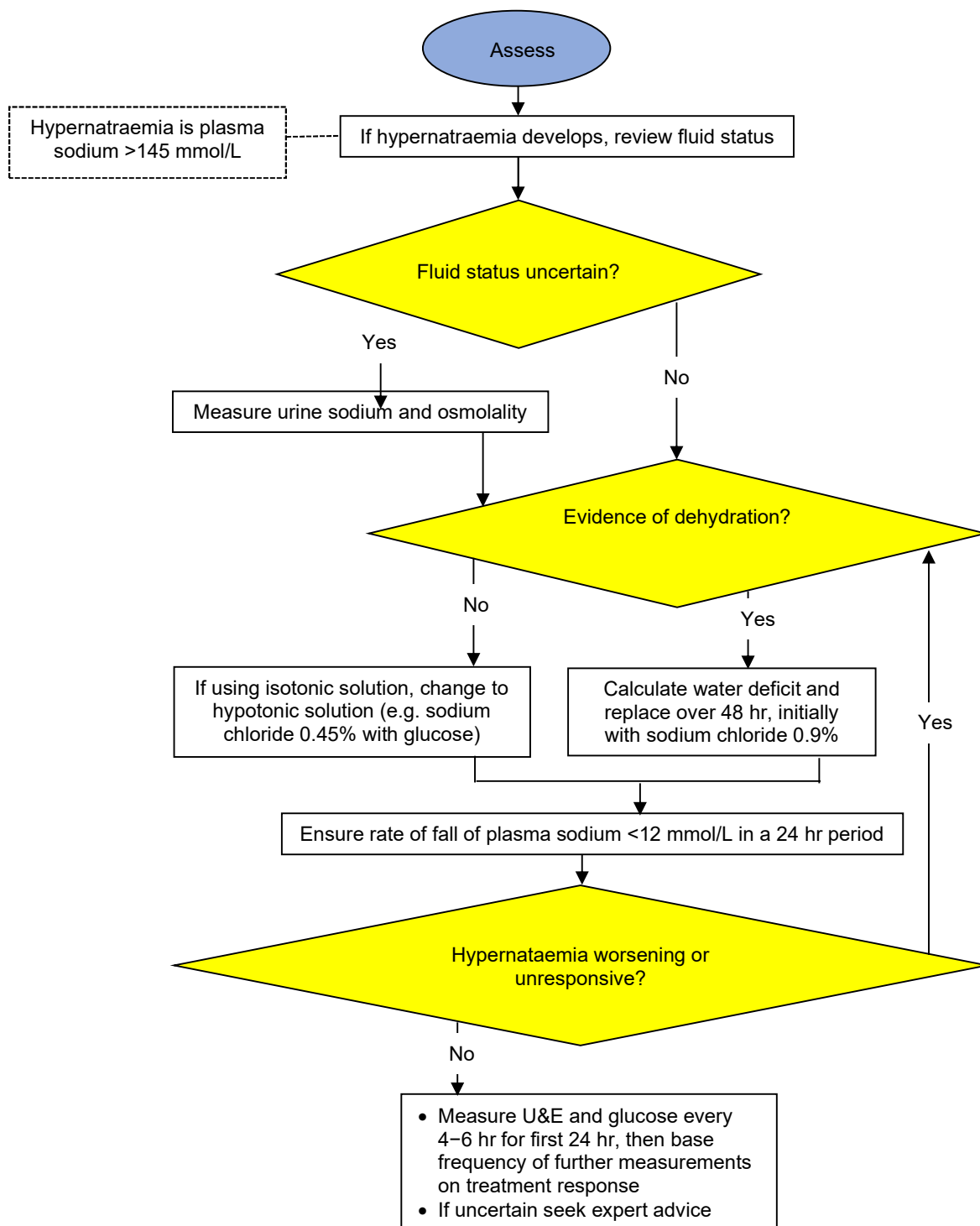
INTRAVENOUS FLUID THERAPY • 5/7

Algorithm 4: Replacement and redistribution



INTRAVENOUS FLUID THERAPY • 6/7

Algorithm 5: Managing hypernatraemia that develops during IV therapy



INTRAVENOUS FLUID THERAPY • 7/7

Algorithm 6: Managing hyponatraemia that develops during IV therapy

